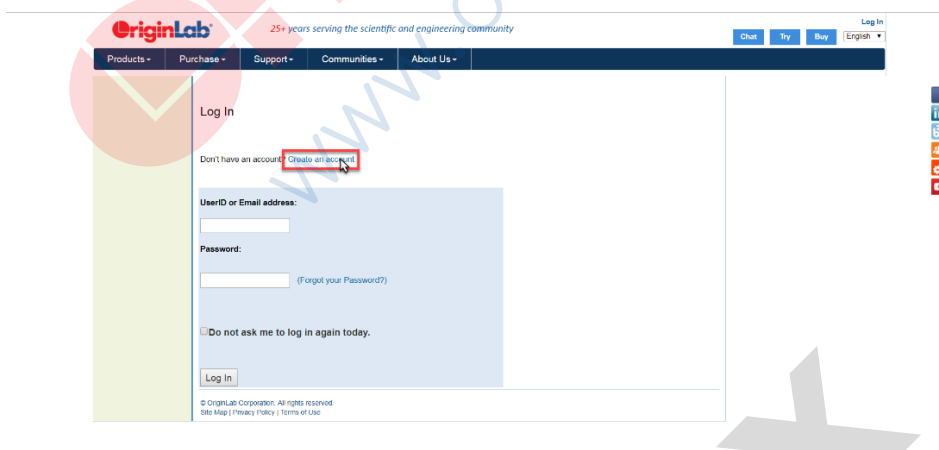


Origin Network License Client 설치 가이드

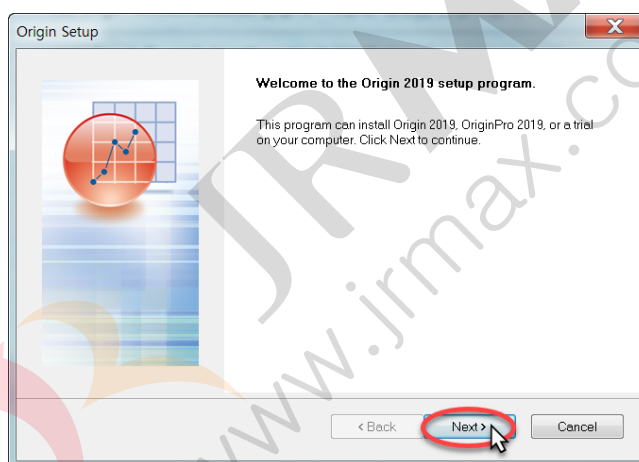
- 1 다음 URL 주소로 접속하여 Origin Client 설치 프로그램을 다운로드 받습니다. 설치 프로그램을 다운로드 받기 위해서는 로그인을 하셔야 합니다. (설치 프로그램은 당사에서 제공하는 설치 미디어 (CD 혹은 USB)를 사용하여 설치할 수도 있습니다.)

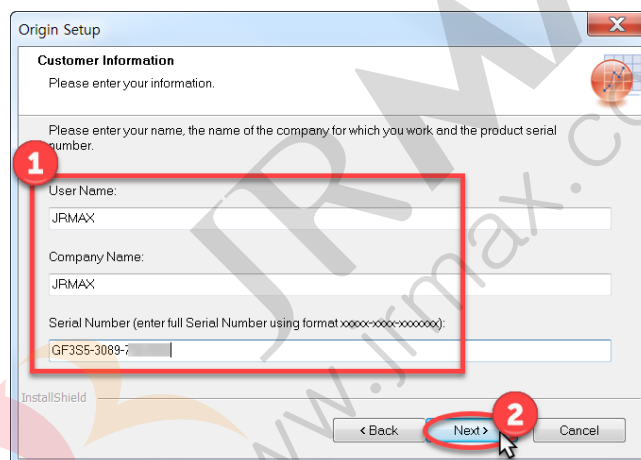
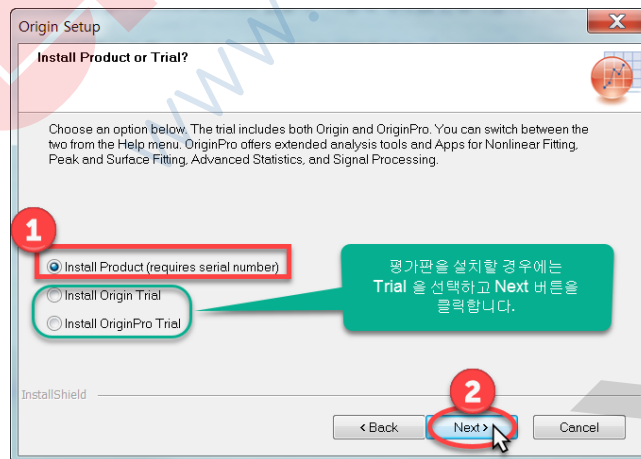
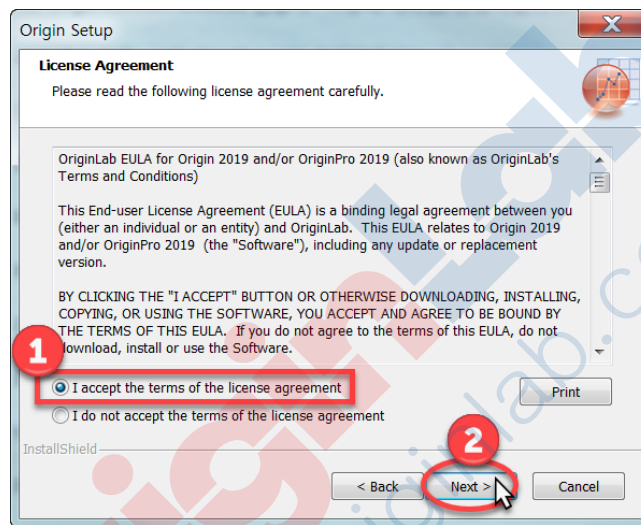
<https://www.originlab.com/demodownload.aspx>

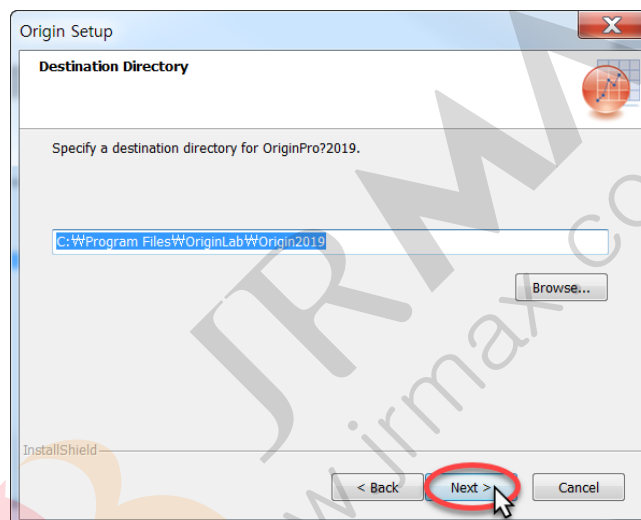
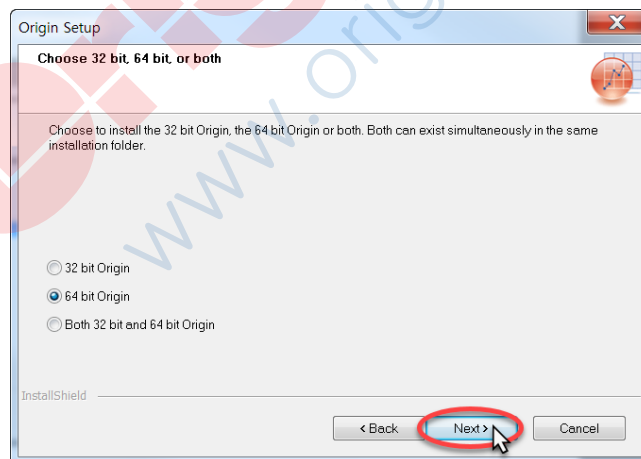
- ※ OriginLab 홈페이지에 가입된 ID가 없는 경우, 'Create an account' 를 클릭하고 회원 가입을 하셔야 합니다.

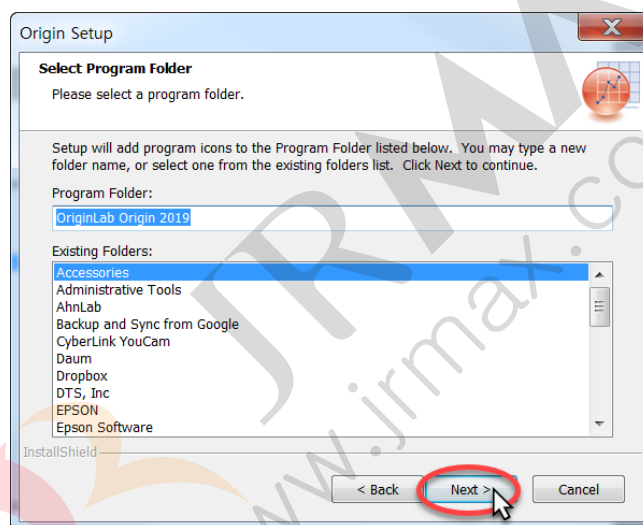
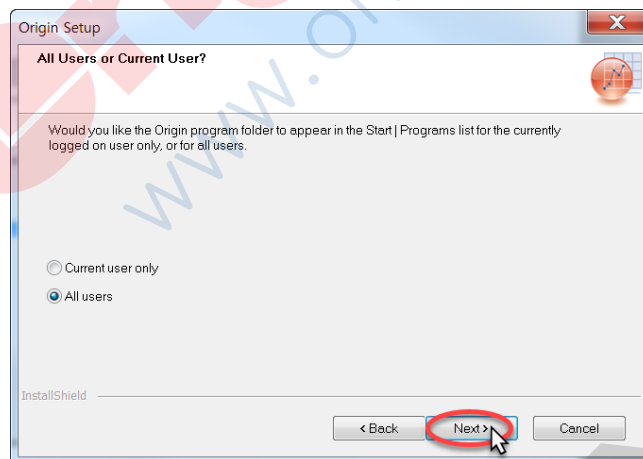
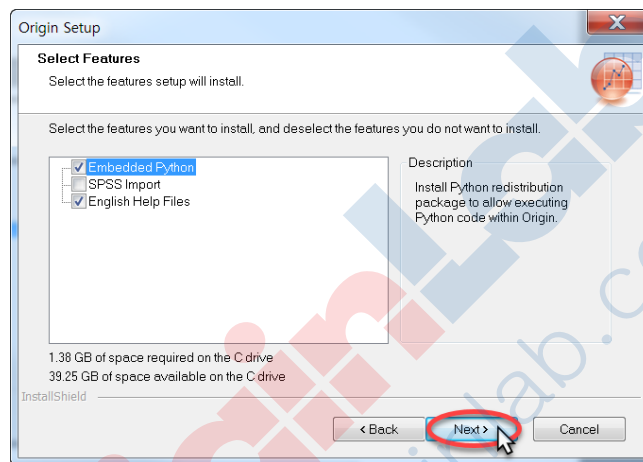


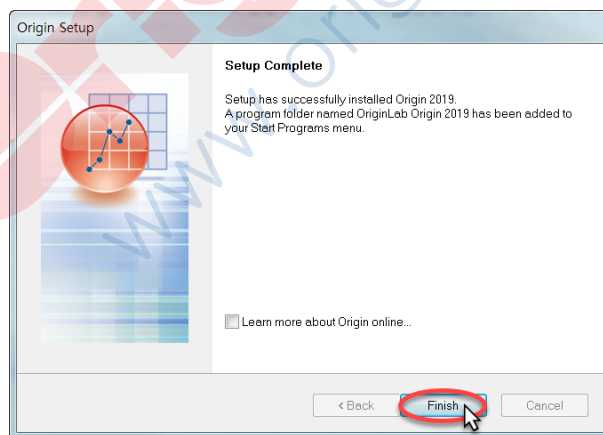
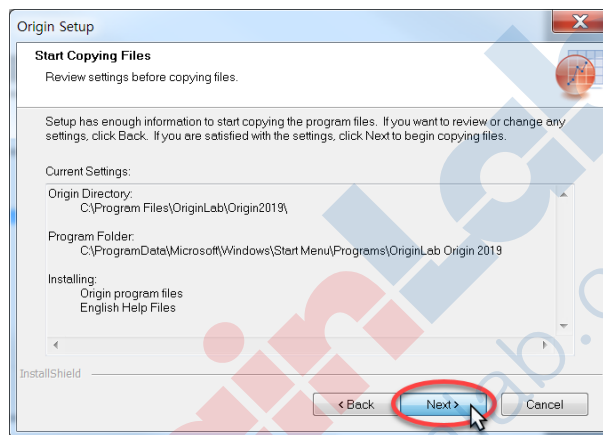
- 2 Origin 설치 프로그램을 실행하여 Origin을 설치합니다.



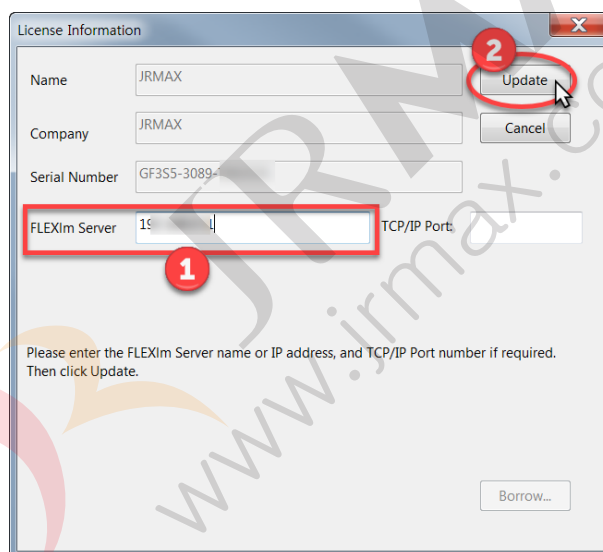








- Origin 설치를 완료한 후 Origin을 실행하고, 'License Information' 대화상자에서 'FLEXlm Server' 입력란에 서버 컴퓨터의 IP 주소를 입력하고 'Update' 버튼을 클릭합니다.



- 4 'Successful' 메시지가 나타나면 정상적으로 Origin을 이용하실 수 있습니다.

